



Bill Taute Homes proudly presents the "Reveille" plan. This single story MIL floor plan features a gourmet kitchen that opens to the Great room & breakfast area. The back of the house is full of windows for wonderful natural light. This functional plan has a Master Suite, 2nd bedroom, and study/ 4th bedroom that is separate from the guest suite for quiet privacy. A formal dining room is included for those special occasions. Relax in the evenings under the front or back covered porches. This home is energy efficient and environmentally friendly green building practices are strictly adhered to throughout. Engineered slab and third party inspections on all structural construction.

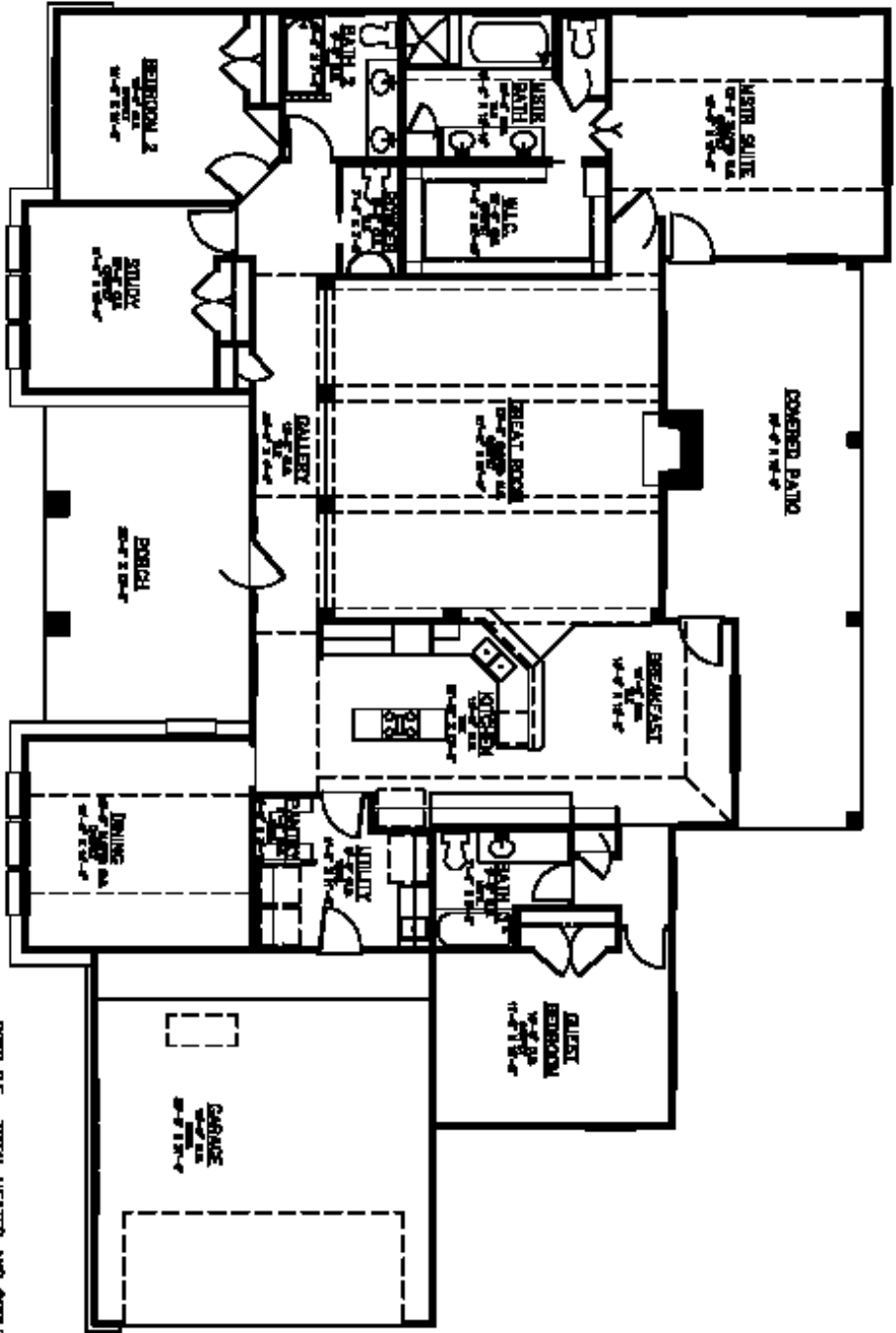
Built on your lot starting at \$275,000.00

- **2650 sf Conditioned**
- **3 Bedroom, 3.5 Bath**
- **Study-opt. 4th Bedrm**
- **Tankless Water Heaters**
- **13.75 SEER HVAC**
- **Low E Windows**
- **Cellulose Insulation**
- **Custom Cabinets**
- **Granite Countertops**

Contact us for free consultation on any new home construction, additions, or remodel projects. We have several floor plans available for your building site, and we work with several of the top architects and designers in the area to meet our clients custom needs.



Contact Bill Taute
billtaute@mindspring.com
512-940-0666



2880 S.F. - TOTAL HEATED AND COVERED S.F.
 514 S.F. - GARAGE
 290 S.F. - PORCH
 388 S.F. - COVERED PATIO